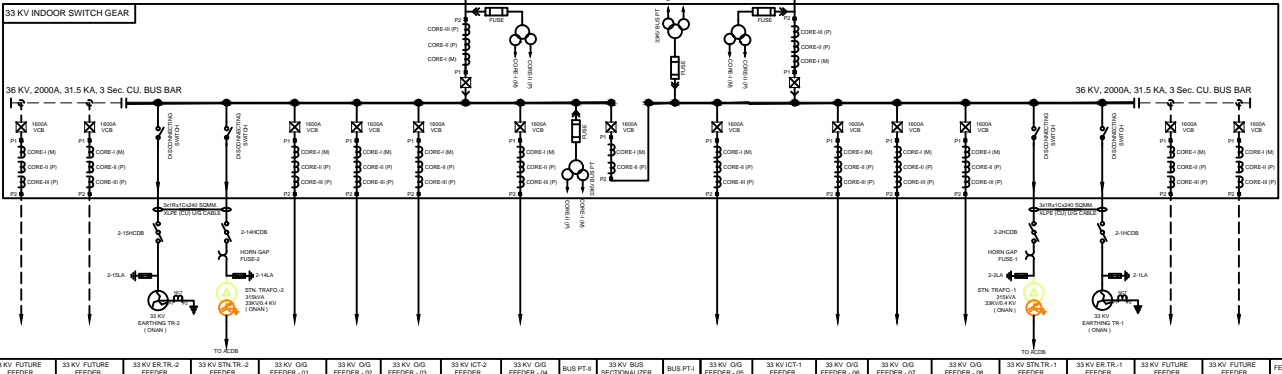
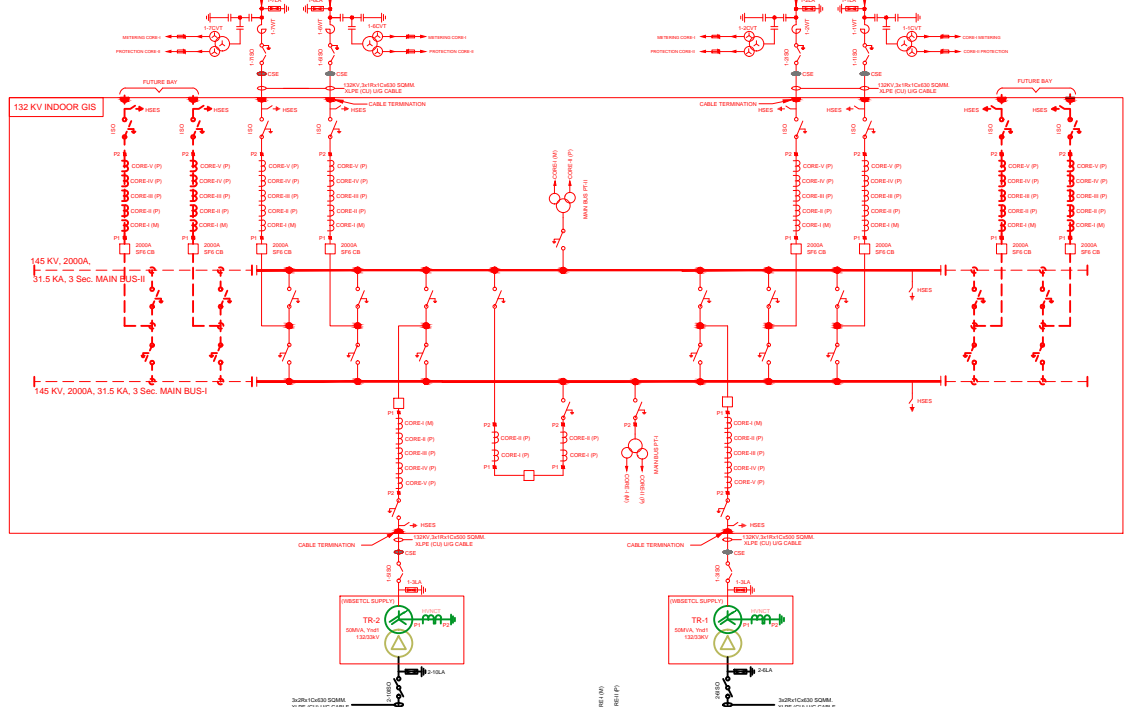


BAY DETAILS	132KV FUTURE BAY	132KV FUTURE BAY	132KV LINE BAY 1 BAJKUL-CORLA FEEDER	132KV LINE BAY 2 BAJKUL-CORLA FEEDER	132KV ICT-2 BAY	132KV BUS COUPLER BAY	132KV ICT-1 BAY	132KV LINE BAY 3 NEW HALDA-1 FEEDER	132KV LINE BAY 4 NEW HALDA-1 FEEDER	132KV BUS HIGH SPEED EARTH SWITCH	132KV FUTURE BAY	132KV FUTURE BAY	BAY DETAILS
BAY NUMBER	D	C	07	06	05	04	03	02	01		B	A	BAY NUMBER



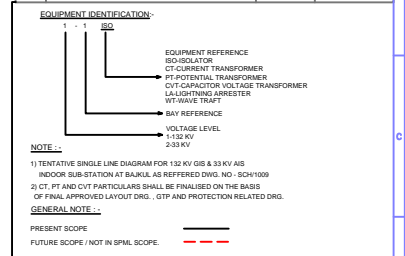
33KV FUTURE FEEDER	33KV FUTURE FEEDER	33KV EX-TR-2 FEEDER	33KV STN TR-2 FEEDER	33KV QG FEEDER-01	33KV QG FEEDER-02	33KV QG FEEDER-03	33KV ICT-2 FEEDER	33KV QG FEEDER-04	BUS PFI-8	33KV BUS SECTIONALISER	BUS PT-1	33KV EX-TR-1 FEEDER	33KV ICT-1 FEEDER	33KV QG FEEDER-05	33KV QG FEEDER-06	33KV STN TR-1 FEEDER	33KV EX-TR-1 FEEDER	33KV FUTURE FEEDER	33KV FUTURE FEEDER	FEEDER DETAILS
--------------------	--------------------	---------------------	----------------------	-------------------	-------------------	-------------------	-------------------	-------------------	-----------	------------------------	----------	---------------------	-------------------	-------------------	-------------------	----------------------	---------------------	--------------------	--------------------	----------------

AS BUILT

REV.	A.S.					
01	ISSUED AS PER TENDERS COMMENTED LETTER NO- 0280/PNO - 86/BAJKUL/S/S DATED ON : - 06/04/18					
02	ISSUED FOR APPROVAL					
REV.	DESCRIPTION	BY	APPROV.	DATE	SCALE	STR.

SL. NO.	LEGEND	DESCRIPTION	QTY.
01		50 MVA, 132/33 KV, 3PH, POWER TRANSFORMER (TWO WINDING) 132 KV, BUSBING & NEUTRAL CT - 300 - 1A, P5 CLASS (WBSETCL SUPPLY)	2 NOS.
02		315KVA, 330/45 KV, 3PH, STATION SERVICE TRANSFORMER (TWO WINDING)	2 NOS.
03		33KV, 3PH, EARTHING TRANSFORMER NEUTRAL BUSHING CT - 100 - 1A, 30VA, 5P CLASS	2 NOS.
04		132 KV DOUBLE BUS BAR, 3 PH, ENCAPULATED GIS INCLUDING LOCAL CONTROL CIRCUIT (LCC) EXCLUDING CONTROL & PROTECTION RELAYS, COMPLETE AS PER TECHNICAL SPECIFICATION & REQUIREMENT COMPRISING OF - i) 4 NOS. FEEDER BAYS ii) 2 NOS. TRANSFORMER BAYS iii) 1 NO. BUS COUPLER BAY iv) 2 NOS. BUS PT 132000 - 110 (4) 100 (4) 100 (4) 200 (4) CORE FOR MAINBUS & MAIN BUS WITH DISCONNECTOR & EARTH SWITCH v) CT RATIO FOR FEEDER & TRANSFORMER - 1000-800-400/1A (2) VA (2) CORE, CT RATIO FOR BUS COUPLER - 2000-1800/1A (2) VA (2) CORE	1 LOT
05		132 KV, 1250 A, 31.5 KA FOR 3 SEC, HCB, MOTOR OPERATED, 3 PH ASSEMBLY WITH SINGLE EARTH SWITCH	4 SETS.
06		132 KV, 1250 A, 31.5 KA FOR 3 SEC, HCB, MOTOR OPERATED, 3 PH ASSEMBLY WITHOUT EARTH SWITCH	2 SETS.
07		132 KV, 10 KA, HEAVY DUTY STATION CLASS GAPLESS LA	18 NOS.
08		132 KV LINE CVT (132000 - 110 (4) 110 (4) 110 (4) 200 (4) 1 PH)	12 NOS. INCL NEW HALDA SUB STATION
09		132 KV LINE TRAP (BROAD BAND)	8 NOS. INCL NEW HALDA SUB STATION
10		33 KV INDOOR DRAWOUT TYPE VCB (1800A) SWITCHGEAR ASSEMBLY INCLUDING LOCAL CONTROL CIRCUIT (LCC) EXCLUDING CONTROL & PROTECTION RELAYS, COMPLETE AS PER TECHNICAL SPECIFICATION & REQUIREMENT COMPRISING OF - i) 4 NOS. OUTGOING FEEDER BAYS ii) 2 NOS. INCOMING TRANSFORMER BAYS INCLUDING LINE PT - 132000 - 110 (4) 110 (4) 110 (4) 200 (4) CORE iii) 1 NO. BUS COUPLER BAY INCLUDING 2 SET OF BUS PT - 132000 - 110 (4) 110 (4) 110 (4) 200 (4) CORE iv) 4 NOS. DISCONNECTOR FOR CONNECTION OF 33 KV CABLE OF 2 NOS. STN. SERVICE & 2 NOS. EARTHING TR. TO 33 KV INDOOR SW GEAR BUS v) CT RATIO FOR FEEDER - 1000-800-400/1A (2) VA (2) CORE, CT RATIO FOR BUS COUPLER - 1000-800/1A (2) VA (2) CORE	1 LOT
11		33 KV, 1250 A, 25 KA FOR 3 SEC, HCB, 3 PH ASSEMBLY FOR EARTHING TRANSFORMER AND LV SIDE OF 2 NOS. 132 / 33 KV TR.	4 NOS.
12		33 KV, 1250 A, 25 KA FOR 3 SEC, HCB, 3 PH ASSEMBLY FOR HORN GAP SWITCH	2 NOS.
13		42 KV, 10 KA, HEAVY DUTY STATION CLASS GAPLESS LA	18 NOS.
14 A)		132KV, 1R1+1C630 SOMM XLPE (CU) UG CABLE	AS REQD.
B)		132KV, 1R1+1C600 SOMM XLPE (CU) UG CABLE	AS REQD.
15 A)		33KV, 2R1+C630 SOMM XLPE (CU) UG CABLE	AS REQD.
B)		33KV, 1R1+C630 SOMM XLPE (CU) UG CABLE	AS REQD.

SL. NO.	SYSTEM PARTICULARS	132KV	33KV
01.	SYSTEM OPERATING VOLTAGE	132KV	33KV
02.	MAXIMUM OPERATING VOLTAGE OF SYSTEM (RMS)	145KV	38KV
03.	SYSTEM NEUTRAL EARTHING	EFFECTIVELY EARTHED	EARTH THROUGH GROUNDING TRANSFORMER
04.	RATED FREQUENCY	50HZ	50HZ
05.	BASIC INSULATION LEVEL (KV/PT: 2500 MU SEC.)		
	1) EQUIPMENT (EXP. TRAPD.)	650	170
	2) TRANSFORMER	550	170
06.	ONE MINUTE POWER FREQUENCY DRY & WET VOLT. (KV RMS)		
	1) EQUIPMENT	275	70
	2) TRANSFORMER	250	70
07.	SYSTEM FAULT	31.5KA FOR 3 Sec.	31.5KA FOR 3Sec. FOR OUT DOOR 25KA FOR 3 Sec.



LOA NO: CEP/WBSETCL/SUB-STN./PACKAGE-86/SUPPLY /2014-15/33, DATED ON : - 17.12.14

WEST BENGAL STATE ELECTRICITY TRANSMISSION COMPANY LIMITED

OFFICE OF ASSISTANT ENGINEER
BAJKUL 132KV (GIS) SUB-STATION
MIRZAPUR, BHAGANPUR, PURBA MEDINIPUR, PIN-721008

TITLE : SINGLE LINE DIAGRAM OF BAJKUL 132KV (GIS) S/S UNDER TAMLUK AREA OFFICE