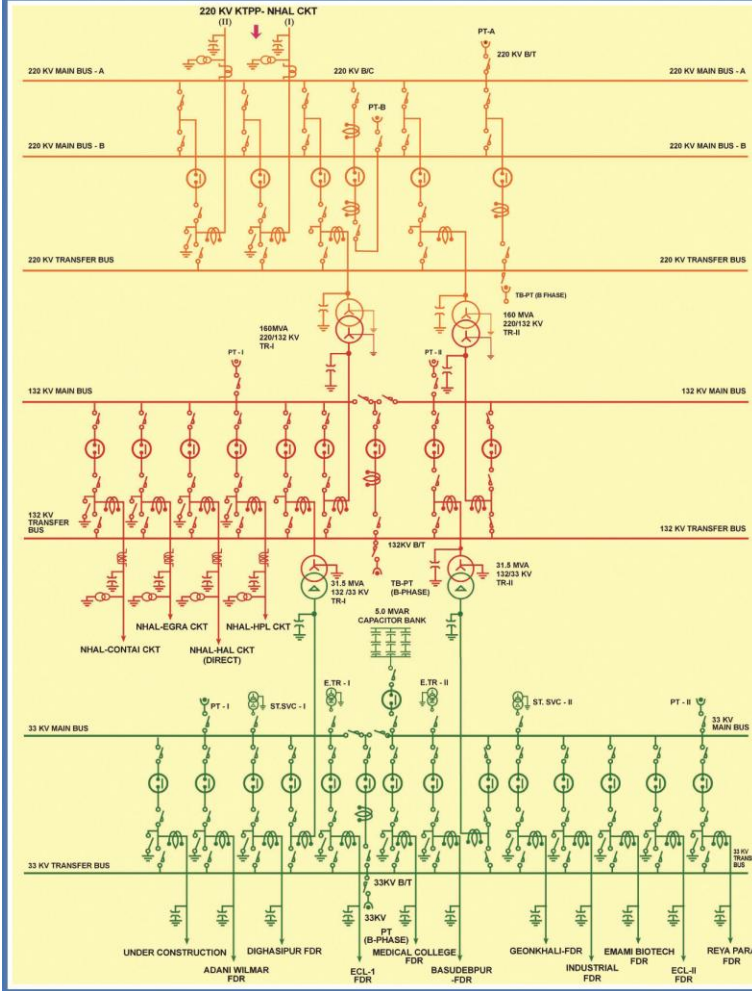




## NEW HALDIA 220/132/33 KV SUB-STN



### CT RATIO

#### 220 KV System

220 KV KТПP Ckt-I/II - 800 / 1A  
 160 MVA Tr. I/II (HV Side) - 800 / 1A  
 220 KV Bus Coupler - 1600 / 2A  
 220 KV Bus Transfer - 800 / 1A

#### 132 KV System

132 KV NHAI - Egra ckt - 600 / 1A  
 132 KV NHAI - Contai - 600 / 1A  
 132 KV NHAL - HALDIA - 600 / 1A  
 132 KV NHAL - HPL - 600 / 1A  
 132 KV Bus Transfer - 800 / 1A  
 160 MVA TR. I / II (HV Side) - 800 / 1A  
 31.5 MVA Tr. I / II (HV Side) - 150 / 1A

#### 33 KV System

|                               |          |
|-------------------------------|----------|
| Adani                         | 400 / 1A |
| Digashipur                    | 400 / 1A |
| 31.5 MVA Tr. I / II (LV Side) | 800 / 1A |
| 33 KV Bus Transfer            | 600 / 1A |
| Emami Biotech                 | 400 / 1A |
| Industrial                    | 400 / 1A |
| ECL - I / II                  | 400 / 1A |
| Reyapara                      | 400 / 1A |
| Medical College               | 400 / 1A |
| Basudevpur                    | 400 / 1A |
| Capacitor Bank                | 200 / 1A |
| Capacitor Bank ( NCT)         | 2 / 1A   |

### PT RATIO

#### 220 KV System

PT A/B - (220 KV /  $\sqrt{3}$  : 110V /  $\sqrt{3}$ )

#### 132 KV System

PT I/II - (132 KV /  $\sqrt{3}$  : 110V /  $\sqrt{3}$ )

#### 33 KV System

PT I/II - (33 KV /  $\sqrt{3}$  : 110V /  $\sqrt{3}$ )

|  |                                |
|--|--------------------------------|
|  | CIRCUIT BREAKER                |
|  | ISOLATOR                       |
|  | EARTH ISOLATOR                 |
|  | CURRENT TRANSFORMER            |
|  | POTENTIAL TRANSFORMER          |
|  | WAVE TRAP                      |
|  | CAPACITIVE VOLTAGE TRANSFORMER |
|  | LIGHTNING ARRESTER             |